

PRODUCT DATASHEET

HS733LE Sensor | With Blue Light Technology

OVERVIEW

The HS733LE-B sensor with Blue Laser Technology is used to inspect the leading edge of blades or vanes used in aircraft and power system engines made from nickel alloy, composite, stainless steel, titanium or ceramic. Designed to scan both sides of the blade simultaneously, the sensor returns a complete profile around the radius of the blade, which allows the accurate measurement of the thickness and the plotting of the blade profile for comparison to its engineering design. The edge radius can also be analyzed.

The sensor connects to a Windows™ 10 laptop or tablet PC via a USB 2.0 cable. No other hardware or external power source is required.



OPERATING FEATURES

MEASUREMENT RANGE

The HS733LE-B is designed to scan smaller blades and to fit into tighter spaces than the HS730LE-B model. The HS733LE-B has a 0.150-inch field-of-view (FOV). The table below shows the range of blade sizes that can be measured using the HS733LE-B sensor. The range is expressed in terms of the maximum blade thickness at a distance back from the leading edge. This distance is called the setback distance.



RESOLUTION

With a 0.150" field-of-view (FOV), the HS733LE-B has a scanning resolution of 0.0002", and measurement accuracy to within 0.0005" (12µm) on the blade thickness.

BLUE LASER TECHNOLOGY

When measuring on nickel alloy, composite, stainless steel, titanium or ceramic blades, the reduced wavelength of the blue laser offers precise tracing of the blade profile. The blue laser generates a minimal laser point on the surface (approximately 0.002") and therefore offers stable, highly accurate and more consistent results on measuring objects that are normally considered as critical.

FEEDBACK

Scanning is as simple as positioning the sensor on the edge of the blade and pulling the sensor trigger. Raw video and the plotted profile are displayed in real-time on the laptop or computer used with the sensor. Measurements are recorded when the trigger is released. Out-of-spec conditions are flagged with color symbols.

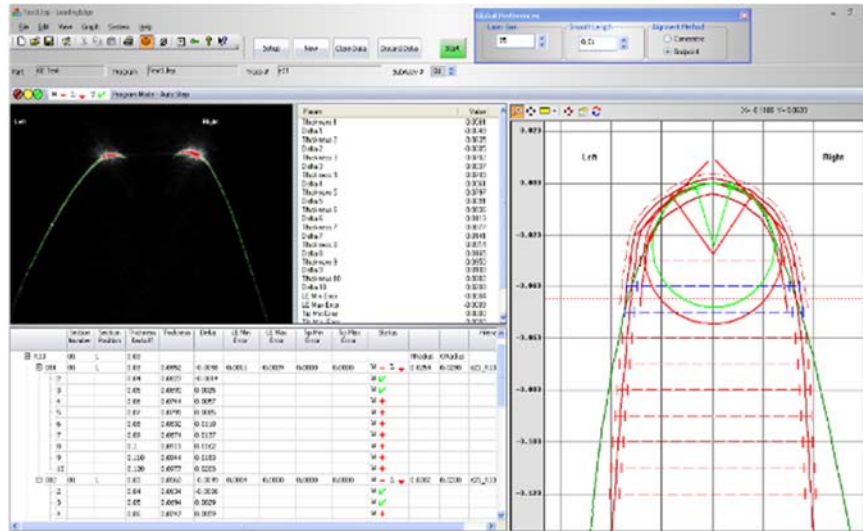
Blade Thickness	Maximum Setback
0.050"	0.250"
0.100"	0.225"
0.150"	0.200"

MEASUREMENTS

Blade Thickness	Blade thickness measured at specified distances (setback) from the leading edge. Thickness can be measured at up to 10 locations on the blade.
Profile Deviation	Profile of actual blade deviating outside a specified tolerance band around the blade's design nominal, specified using customer engineering drawings as templates.
Edge Radius	Radius fit to the edge can be calculated automatically with each scan or with on-screen tools.

PRODUCT DATASHEET

HS733LE Sensor | With Blue Light Technology



Programs – Separate programs can be developed for different blades, specifying different profile nominals and templates and different setback distances for thickness measurements.

Documentation – Data displayed in the table can be saved. The blade profile can be saved automatically for each scan, as well as an image of the plotted profile with measurement lines as shown in the above plot window.

SENSOR SPECIFICATIONS

Type	USB – Handheld
Size	1.75" (w) x 4.5" (h) x 7.5" (l) – width at scanning point is 1.25"
Weight	12 oz.
User Interface	3 LED's, 2 tactile buttons, finger trigger
Cable Length	USB 2.0A to Mini 5-Pin USB, 6' straight cable
FOV Options / Horizontal Scanning Resolution / Depth Accuracy	F02 = 0.150" (4mm) / 0.0002" (5µm) / ± 0.0005" (12µm)
Shock Protection	Cast urethane housing
Environment	0° – 70° C



101 North Alloy Drive, Fenton, MI 48430 USA

Sales@lmicorporation.com

810.714.5811

www.lmicorporation.com

Our commitment to quality may mean a change in specifications without notice.

